



TURFSQUAD

For Sports Lovers, By Sports Lovers.

BOX CRICKET



Highlights

- Min. Area - 120 ft x 60 ft (7,200 sqft)
- Smart Base Work
- Pro Turf
- Custom Design
- Quick Setup

FOOTBALL TURF



Highlights

- Min. Area - 120 ft x 60 ft (7,200 sqft)
- Smart Base Work
- High-Performance Turf
- Custom Size & Branding
- Durable Drainage System

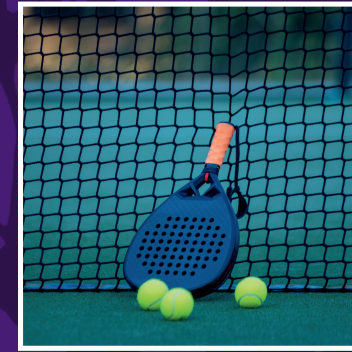
BADMINTON COURTS



Highlights

- Min. Area - 30 ft x 57 ft (1,710 sqft)
- Shock Absorption Base
- Wood/Synthetic Flooring
- Branded Line Markings
- Quick Execution

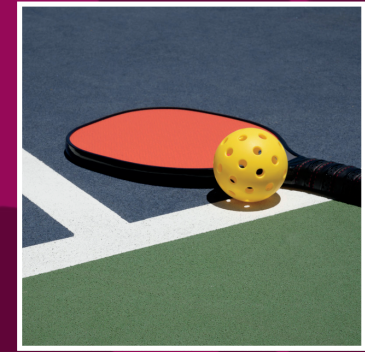
PADEL TENNIS



Highlights

- Min. Area - 33 ft x 66 ft (2,178 sqft)
- RCC Base
- Multiple Surface Options
- Weather-Resistant
- Ideal for Commercial Use

PICKLE BALL



Highlights

- Min. Area - 30 ft x 60 ft (1,800 sqft)
- Asphalt/Modular Tile Base
- Marvel Tiles or PU Surface
- Multi-Use Court Options
- 15+ Color Options

FOR DETAILED SPECI

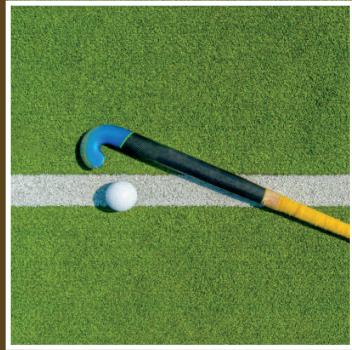
TENNIS COURTS



Highlights

- Min. Area - 60 ft x 120 ft (7,200 sqft)
- Asphalt or Concrete Base
- Synthetic/Acrylic Surface
- Pro Line Markings
- Custom Branding Options

HOCKEY TURF



Highlights

- Min. Area - 85 ft x 200 ft (17,000 sqft)
- Asphalt Base
- High Shock Absorption
- FIH standard met turf
- Built for Speed & Safety

ATHLETIC TRACKS



Highlights

- Designed as per your area, fully customised
- Synthetic/Clay or Hybrid
- Drainage Integration
- High-Durability Finish
- Ideal for Colleges etc.

SWIMMING POOL



Highlights

- Area as per your need - leisure/professional
- RCC + Waterproofing
- Filtration & Drainage
- Tiling & Safety Fixtures
- Kids Zone Customisation

BASKETBALL COURTS



Highlights

- Min. Area - 50 ft x 94 ft (4,700 sqft)
- Smart Base Work
- PP Tiles or PU Finish
- Indoor/Outdoor Setup
- Lighting & Poles Included

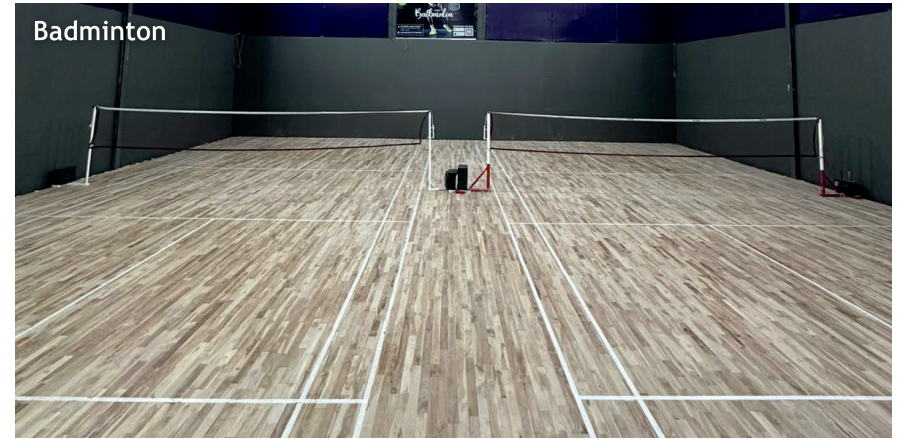
FIGATIONS, SCAN



COMPLETED PROJECTS



Padel Tennis



Badminton



Basketball



Football + Athletics



Pickleball

ONGOING PROJECTS



WHY CHOOSE US?

Turfsquad doesn't just build sports facilities, we create high-performance environments that bring out the best in athletes.

Our manufactured turf systems are engineered to deliver exceptional playability, long term durability and the resilience demanded by competitive sports.

- ✓ ON TIME DELIVERY
- ✓ EXPERTISE-DRIVEN EXECUTION
- ✓ TAILORED TO YOUR VISION
- ✓ RELIABLE AFTER-SALES SUPPORT
- ✓ PROVEN TRACK RECORD



WHAT MAKES US STAND OUT?

1

Performance Focused Design

Engineered to deliver optimal playability, our turf systems strike the perfect balance between comfort, durability, and high-performance output—ensuring a professional-grade experience every time.



2

Custom-Built & Made in India

Proudly manufactured in India, every turf is tailored to client-specific requirements. From density and fiber quality to structural composition and branding—each system is built to suit the sport, surface, and vision.



3

End-to-End Execution

We provide a full-spectrum solution—from consultation and design to civil work, installation, and post-installation maintenance—ensuring a hassle-free, expert-led journey from concept to completion.



TECHNOLOGY PARTNER

TIDA SPORTS is a leading name in India's sports tech space, offering smart solutions for turf management, player engagement, and academy operations. The digital platform simplifies bookings, scheduling, and performance tracking-making sports facilities more efficient and accessible. As a partner, TIDA Sports perfectly complements Turfsquad's mission to build sustainable, tech-enabled sports infrastructure across India.

Wide Reach Trusted Network

Comprehensive Sports Solutions

End-to-End Academy Management

Certified & Skilled Coaches

Active Sports Community

Parental Interaction and Engagement



Trust & Long-Term Relationships

Scalable Programs

Digital Presence for School Partners

Talent Identification & Growth Pathways

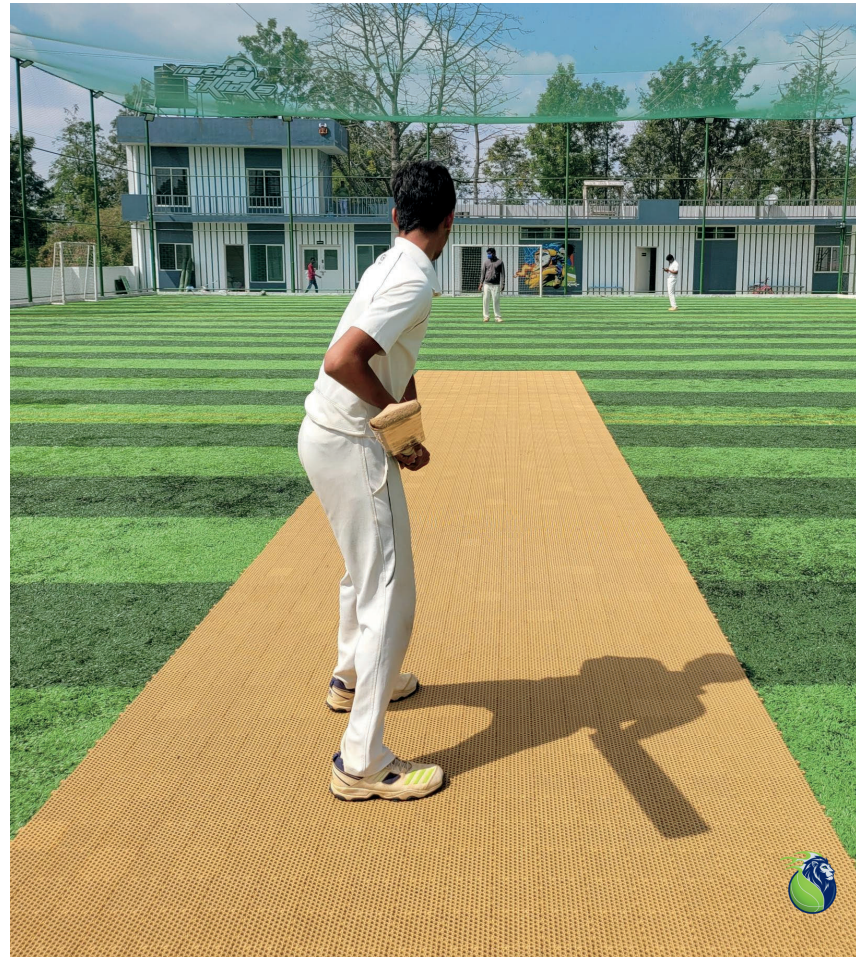
OUR COMMITMENT

Turfsquad is dedicated to delivering sports facilities that not only meet but exceed client expectations. Our holistic approach emphasizes collaboration, innovation, and sustainability, ensuring each project contributes positively to the sporting community and stands the test of time.



**INNOVATIVE
ALTERNATIVES**

TURFSQUAD PORTABLE CRICKET ROLL



INSTANT PLAYABILITY

Rolls out on any flat surface—no cement base needed.

PROFESSIONAL-GRADE PERFORMANCE

Delivers superior bounce and speed for advanced practice.

MULTI-SURFACE COMPATIBILITY

Works on concrete, artificial grass, or compacted soil.

PORTABLE & REUSABLE

Easily transportable; roll out, play, and roll back.

DURABLE & ECO-FRIENDLY

Lasts over 8 years; 100% recyclable and Made in India.





TS PICKLEBALL PORTABLE MAT

HIGH-STRENGTH PUR SURFACE
Stain and scratch-resistant, durable.

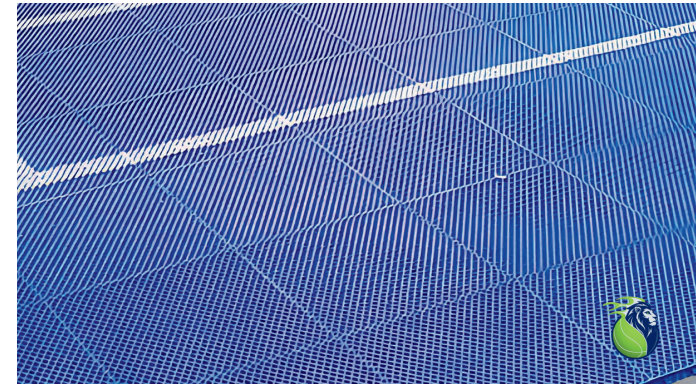
NANO-RESIN LAYER
High hardness, 100% virgin materials.

FIBERGLASS STABILIZING LAYER
Reduces expansion, enhances stability.

COMPRESSION LAYER
increases strength and bounce.

HIGH-DENSITY FOAM LAYER
Effective shock absorption.

ANTI-SLIP BACKING
Prevents movement;
waterproof and crack-resistant outdoors.



TS MARVEL TILES

ITF & FIBA CERTIFIED
Meets global standards for tennis and basketball play.

JOINT-FRIENDLY CUSHIONING
Soft, impact-absorbing tiles for reduced strain and fatigue.

ALL-WEATHER READY
No waterlogging or slippage—play safely even in rain.

1-DAY INSTALLATION
increases strength and bounce.

HIGH-DENSITY FOAM LAYER
Quick setup over cracked or uneven surfaces.

MODULAR & RELOCATABLE
Portable design ideal for schools and multi-use spaces.



Let's Build Together

We don't just install surfaces—we build opportunities for talent, growth, and community impact.



WWW.TURFSQUAD.IN



[TURFSQUAD_IN](https://www.instagram.com/TURFSQUAD_IN)



CONTACT@TURFSQUAD.IN

Rahul Dange

+91-85590 78767

Abhishek Dange

+91-94163 94143